

Exterra® Primary Belt Cleaner



Read and understand equipment operator's manual before operating or performing maintenance. Failure to do so could result in serious injury or death.

Safety Information

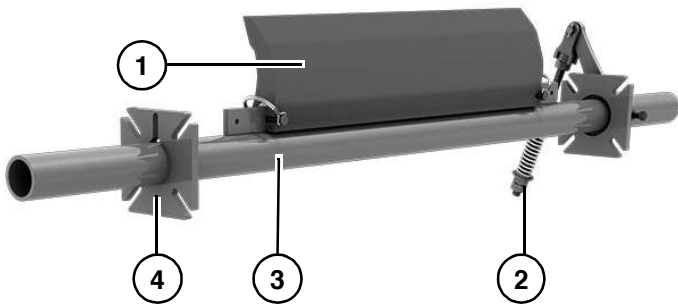
⚠ WARNING

Failure to follow instructions below could result in death or serious injury:

- Lockout/Tagout/Blockout before performing maintenance or installation.
- Follow installation instructions completely. Failure to do so may cause death or serious injury.

Overview

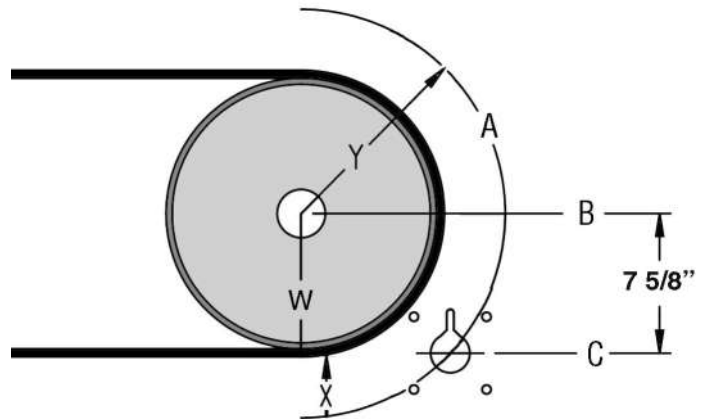
Figure 1



1. Blade (patent D594,623 U.S. / 126,564 Canada)
2. Tensioner
3. Shaft
4. Shaft Mounting Bracket

Installing Belt Cleaner

Figure 2



1. Measure distance from center of pulley shaft to outside belt surface "W".
2. Add "X" value from chart to "W" measurement to determine "Y" distance.

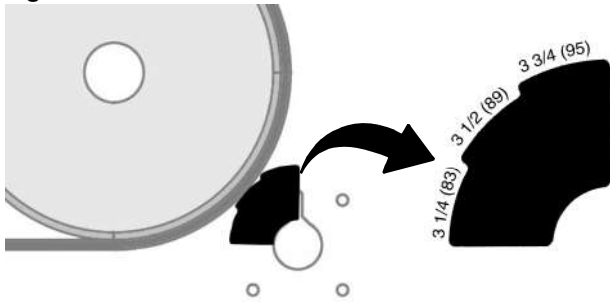
Pulley Radius ("W")* - inch (mm)	"X" - inch (mm)
6 (152)	3 3/4 (95)
8 (203) and larger	3 1/4 (83)
*includes lagging and belt	

Note: If pulley radius is less than 6 inches, contact Superior Engineering for recommended cleaner placement.

3. From center of pulley, draw an arc equal to "Y" distance (Label Arc "A").
4. Draw a horizontal line from center of pulley shaft outward (Label Line "B").
5. Measure down from Line "B" - 7 5/8 inches (194 mm) and draw a horizontal line parallel to Line "B" and intersect Arc "A". (Label this line "C")
6. Where Arc "A" and Line "C" intersect is center point for shaft mounting bracket.

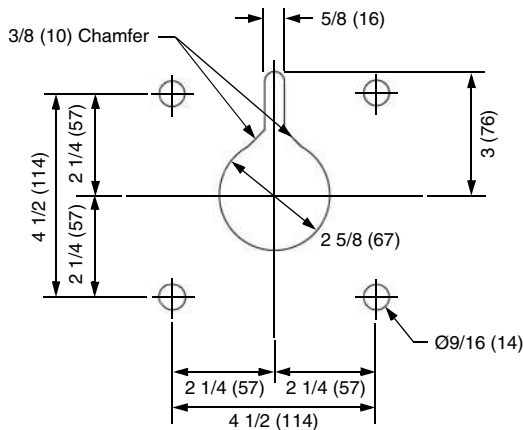
Note: If no structure is available for hole locating, add additional mounting plate.

Figure 3



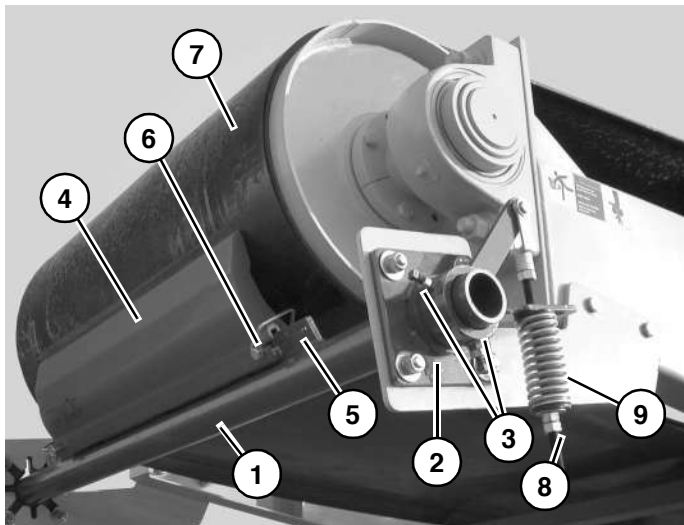
7. With gauge (provided), double check measurements as shown. Adjust measurements as needed.

Figure 4



8. Drill holes for shaft mounting bracket. Template is also provided with Exterra Primary Belt Cleaner.
9. Repeat steps 1-8 on opposite side of conveyor.

Figure 5



Refer to (Figure 5)

10. Insert shaft (1) into shaft mounting brackets (2).
11. Position groove of new blade (4) on blade mounting bracket (5). Position in the center with blade curve facing belt (7).
12. Install pin clips (6).
13. Rest blade against belt surface (7) and tighten set screws (3) on both sides.
14. Tighten adjustment nut (8) on tension rod (9) to recommended tension settings (page 33).

Maintenance

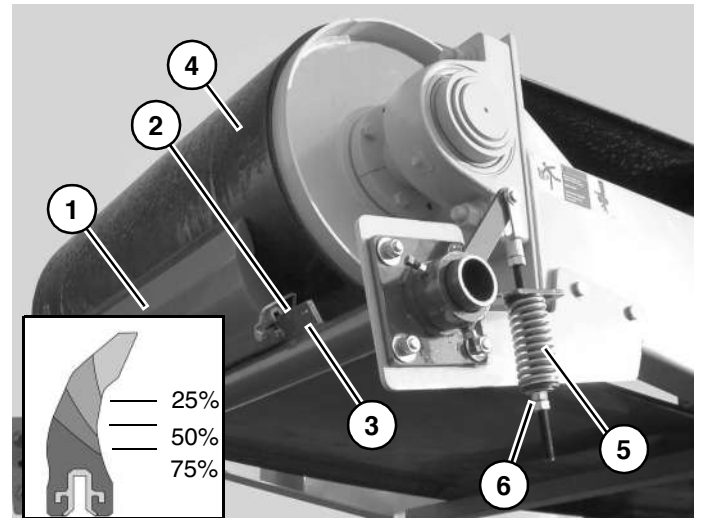
Weekly

- Check blade for excessive wear (Figure 6).
- Check blade tension (page 33).

Blade Replacement

Replace blade when worn between 50%-75%. Material being conveyed determines how often replacement is required. (Figure 6)

Figure 6



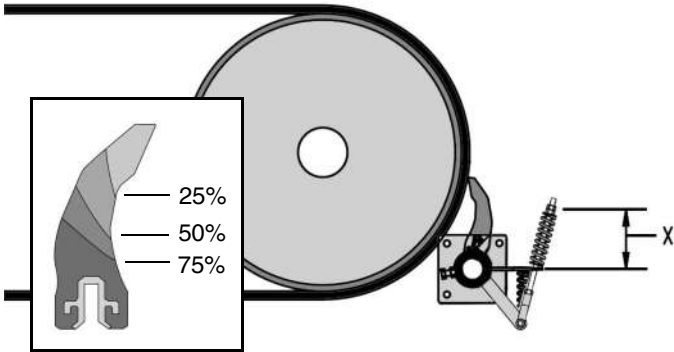
Refer to (Figure 6)

1. Remove tension from blade (1) by loosening adjustment nut (6) on tension rod (5).
2. Remove existing pin clips (2) and worn blade. Keep pin clips for installation of new blade.
3. Position groove of new blade (1) on blade mounting bracket (3). Position in center with blade curve facing belt (4).
4. Reinstall pin clips (2).
5. Tighten adjustment nut on tension rod to recommended tension settings (page 33).

Belt Cleaner Tension Settings

Reapply tension when necessary. It is recommended tension be adjusted 4-6 times throughout life of blade.

Figure 7



Blade Length in (mm)	Qty of Tensioner	"X" Dim New Blade in (mm)	"X" Dim 25% Wear in (mm)	"X" Dim 50% Wear in (mm)	"X" Dim 75% Wear in (mm)
10 (254)	1	4 (102)	4 1/4 (108)	4 1/2 (114)	4 1/2 (114)
16 (406)	1	3 3/4 (95)	4 (102)	4 1/4 (108)	4 1/2 (114)
22 (559)	1	3 1/2 (89)	3 3/4 (95)	4 (102)	4 1/4 (108)
28 (711)	1	3 (76)	3 1/2 (89)	3 3/4 (95)	4 (102)
34 (864)	1	2 3/4 (70)	3 1/4 (83)	3 1/2 (89)	3 3/4 (95)
40 (1016)	2	3 3/4 (95)	3 7/8 (98)	4 1/8 (105)	4 1/4 (108)
46 (1168)	2	3 1/2 (89)	3 3/4 (95)	4 (102)	4 1/8 (105)
52 (1321)	2	3 1/4 (83)	3 1/2 (89)	3 3/4 (95)	4 (102)
58 (1473)	2	3 1/4 (83)	3 1/2 (89)	3 3/4 (95)	4 (102)
64 (1626)	2	3 (76)	3 3/8 (86)	3 5/8 (92)	3 7/8 (98)
70 (1778)	2	3 (76)	3 1/4 (83)	3 1/2 (89)	3 3/4 (95)

Specifications

Primary Blade Length: 10 in - 70 in (254 mm - 1778 mm)

Primary Blade: Material: 87A Urethane

Fits Belt Widths: 18 in - 72 in (457 mm - 1829 mm)

Pole Length: 48 in - 114 in (1219 mm - 2896 mm)

Tensioner Quantity: 1 or 2

Troubleshooting

If problem you are experiencing is not listed or solution does not solve problem call Superior Industries for help.

Problem	Cause
Excessive blade wear.	1
Blade wears in center more than ends.	2
Insufficient belt cleaning and carry back.	3

1. Tension on blade set too high. Reduce tension. See "Belt Cleaner Tension Settings" for recommendations.
2. Pulley may be crowned. Use belt width minus 8 inches (203 mm) for blade length.

Note: 30 inch belt width minus 8 inches = 22 inch blade length.

3. Tension on blade set too low or high. Increase or decrease tensioner setting. See "Belt Cleaner Tension Settings" for recommendations.

Replacement Parts

Blade



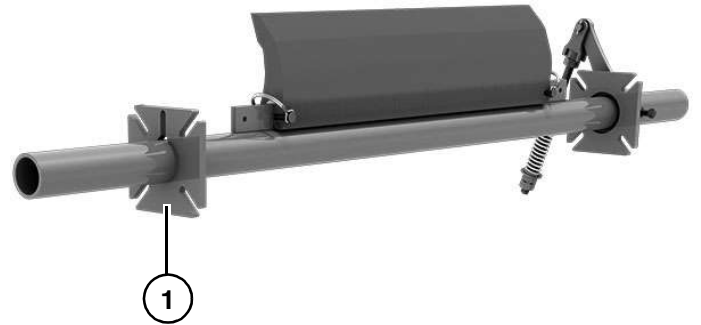
BLADE WIDTH		PART NUMBERS
in.	mm	
10	250	07-00540
16	400	07-00541
22	550	07-00542
28	700	07-00543
34	850	07-00544
40	1000	07-00545
46	1150	07-00546
52	1300	07-00547
58	1450	07-00549
64	1600	07-00548
70	1750	07-00550

Tensioner Assembly



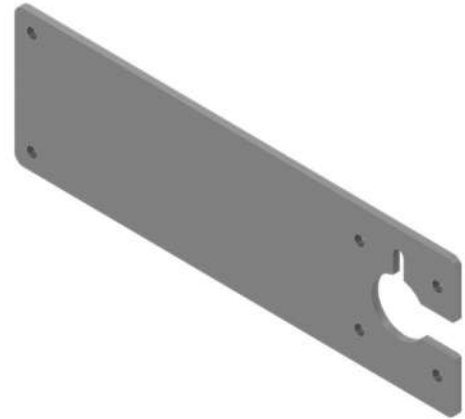
Part Number: 32-000097

Non-Tensioner Bracket



(1) Part Number: 32-000094

Optional Mounting Bracket



Part Number: 32-000188

Optional "L" Mounting Bracket



Part Number: 32-000166