



VIBRATORY EQUIPMENT

Guardian® Horizontal Screen / Anthem® Inclined Screen / Intrepid® Feeder



INTREPID FEEDER



ANTHEM INCLINED SCREEN



01/ CORNER SUPPORT

- » Bottle jack lifting point for 1.5" lift
- » Safer and simpler spring replacement

02/ SPRAY BAR KNOCKOUTS

- » Easily cut thin 1/8" cover
- » Quickly convert to wet plant

03/ SEGMENTED BELT GUARD

- » Multiple pieces for one person job
- » Fully enclosed for safer operation

04/ BOLT-LOCKING HINGED ACCESS DOOR

- » Convenient inspection and maintenance
- » Hinge prevents misplacing cover

05/ INTEGRATED BELT TENSIONER

- » Convenient for easy, quick access
- » Rubber suspension vs spring tension

06/ SIDE LINERS ON DISCHARGE LIPS

- » Standard feature for wear protection
- » 1/4" AR steel bolt in liners

07/ VS2™ TECHNOLOGY

- » Ensures smooth start up and shutdown
- » Provides peace of mind and extends life of equipment

GUARDIAN HORIZONTAL SCREEN FEATURES



01/ CORNER SUPPORT



02/ SPRAY BAR KNOCKOUTS



03/ SEGMENTED BELT GUARD



04/ BOLT-LOCKING HINGED ACCESS DOOR

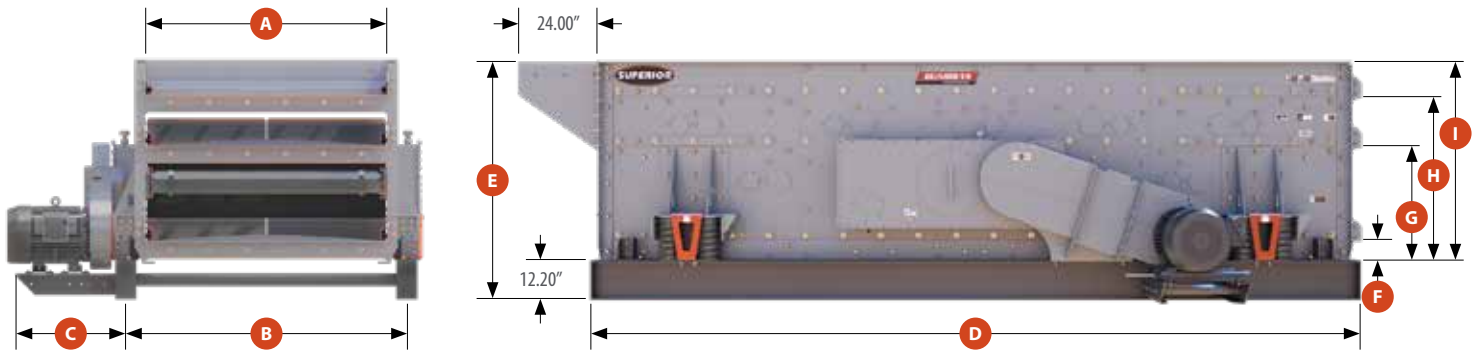


05/ INTEGRATED BELT TENSIONER



06/ SIDE LINERS ON DISCHARGE LIPS

GUARDIAN HORIZONTAL SCREEN SPECIFICATIONS



DIMENSIONS - INCHES (MM)

Model	A	B	C	D	E	F	G	H	I
5162-TH32	61.50 (1,562)	74.00 (1,879)	36.63 (930)	192.75 (4,895)	59.44 (1,509)	5.81 (147)	35.81 (909)	N/A	47.25 (1,200)
5163-TH32	61.50 (1,562)	74.00 (1,879)	36.63 (930)	192.75 (4,895)	75.31 (1,912)	5.69 (144)	35.69 (906)	51.69 (1,312)	63.13 (1,603)
5163-TH32-XC	61.50 (1,562)	74.00 (1,879)	36.63 (930)	192.75 (4,895)	81.31 (2,065)	5.69 (144)	35.69 (906)	57.69 (1,465)	69.13 (1,755)
6162-TH32	76.00 (1,930)	88.50 (2,247)	36.63 (930)	240.75 (6,115)	59.50 (1,511)	5.81 (147)	35.81 (909)	N/A	47.31 (1,201)
6163-TH32	76.00 (1,930)	88.50 (2,247)	36.63 (930)	240.75 (6,115)	75.31 (1,912)	5.69 (144)	35.69 (906)	51.69 (1,312)	63.13 (1,603)
6163-TH32-XC	76.00 (1,930)	88.50 (2,247)	36.63 (930)	240.75 (6,115)	81.31 (2,065)	5.69 (144)	35.69 (906)	51.69 (1,312)	63.13 (1,603)
6202-TH32	76.00 (1,930)	88.50 (2,247)	36.63 (930)	240.75 (6,115)	59.38 (1,508)	5.75 (146)	35.75 (908)	N/A	47.19 (1,198)
6203-TH32	76.00 (1,930)	88.50 (2,247)	36.63 (930)	240.75 (6,115)	75.19 (1,909)	5.56 (141)	35.56 (903)	51.69 (1,312)	63.00 (1,600)
6203-TH32-XC	76.00 (1,930)	88.50 (2,247)	36.63 (930)	240.75 (6,115)	81.19 (2,062)	5.56 (141)	35.56 (903)	57.56 (1,462)	69.00 (1,752)
6202-TS32	76.00 (1,930)	88.50 (2,247)	36.63 (930)	240.75 (6,115)	69.63 (1,768)	4.19 (106)	34.19 (868)	N/A	45.81 (1,163)
6203-TS32	76.00 (1,930)	88.50 (2,247)	36.63 (930)	240.75 (6,115)	85.38 (2,168)	4.00 (101)	34.00 (863)	49.94 (1,268)	61.56 (1,563)
7202-TH38	88.00 (2,235)	100.50 (2,552)	36.63 (930)	240.75 (6,115)	62.19 (1,579)	5.56 (141)	38.56 (979)	N/A	50.00 (1,270)
7203-TH38	88.00 (2,235)	100.50 (2,552)	36.63 (930)	240.75 (6,115)	80.81 (2,052)	5.44 (138)	38.44 (976)	57.19 (1,452)	68.63 (1,743)
7203-TH38-XC	88.00 (2,235)	100.50 (2,552)	36.63 (930)	240.75 (6,115)	86.81 (2,204)	5.44 (138)	38.44 (976)	63.19 (1,605)	74.63 (1,895)
7202-TS38	88.00 (2,235)	100.50 (2,552)	36.63 (930)	240.75 (6,115)					
7203-TS38	88.00 (2,235)	100.50 (2,552)	36.63 (930)	240.75 (6,115)					
8202-TH38	100.00 (2,540)	112.50 (2,857)	36.63 (930)	240.75 (6,115)	62.13 (1,578)	5.50 (139)	38.50 (977)	N/A	49.94 (1,268)
8203-TH38	100.00 (2,540)	112.50 (2,857)	36.63 (930)	240.75 (6,115)	80.69 (2,049)	5.31 (134)	38.31 (973)	57.06 (1,449)	68.50 (1,739)
8203-TH38-XC	100.00 (2,540)	112.50 (2,857)	36.63 (930)	240.75 (6,115)	86.69 (2,201)	5.31 (134)	38.31 (973)	63.06 (1,601)	74.50 (1,892)

NOTE: Vertical dimensions (discharge heights) are from top of baseframe.

Adj. Stroke	5/8" and 3/4"	Timing Angle	30° - 60°	5' and 6' Screen Bearing Size	160mm
Rcmd. Speed Range	675 - 875 RPM	Side Plate Thickness	5/16" (7mm)	7' and 8' Screen Bearing Size	190mm
Max. Feed Size	10.0" (254mm)	Reinforcing Plate Thick.	1/4" (6mm)	Take-Up Rails**	4' standard
Max. Top Deck Opening	5.0" (127mm)	Feed Box Liners*	1/4" (6mm)	Angle	Horizontal or 2.5°
Max. Feed Drop	18" (457mm)	Discharge Lip Liner Thick.*	1/4" (6mm)	Max. Media Weight	8 lb/ft ² (383 pascal)

* AR Plates

** Optional 5-ft. take-up rails on 20-ft. screen



Rock Face to Load Out™



01/ CORNER SUPPORT

- » Bottle jack lifting point for 1.5" lift
- » Safer and simpler spring replacement

02/ DRIVE WEIGHTS

- » Exclusive bolt on shaft weights
- » Adjust stroke 1/4" up or down

03/ SEGMENTED BELT GUARD

- » Easier for one person to access
- » Quick access to sheave and flywheel without completely removing guard

04/ ACCESS DOOR

- » Convenient inspection and maintenance
- » Hinge prevents misplacing cover

05/ STRAIGHT SHAFT (NOT SHOWN)

- » One shaft applicable to all models
- » Bolt weights create eccentric offset

06/ SIDE LINERS ON DISCHARGE LIPS

- » Standard feature for wear protection
- » 1/4" AR steel bolt in liners

ANTHEM INCLINED SCREEN FEATURES



01/ CORNER SUPPORT



02/ DRIVE WEIGHTS



03/ SEGMENTED BELT GUARD



04/ ACCESS DOOR



05/ STRAIGHT SHAFT



06/ SIDE LINERS ON DISCHARGE LIPS

ANTHEM INCLINED SCREEN MODELS AVAILABLE

MODELS			
Model	Double Deck	Triple Deck	Quad Deck
5x16	X	X	
6x16	X	X	
6x20	X	X	
7x20	X	X	
8x20	X	X	X
8x24	X	X	X

Single shaft or two shaft drive based on application.



01/ CORNER SUPPORT

- » Bottle jack lifting point for 1.5" lift
- » Safer and simpler spring replacement

02/ MULTIPLE SPRING ARRANGEMENTS

- » Inboard for heavy loads, rock boxes and stationary applications
- » Lighter duty and portable plant applications

03/ ROBUST PAN SECTION

- » I-Beam supports on 16" centers
- » Improves impact resistance and durability

04/ FULL-LENGTH LINER

- » Standard liner for horizontal
- » Sloped liner for 5° incline

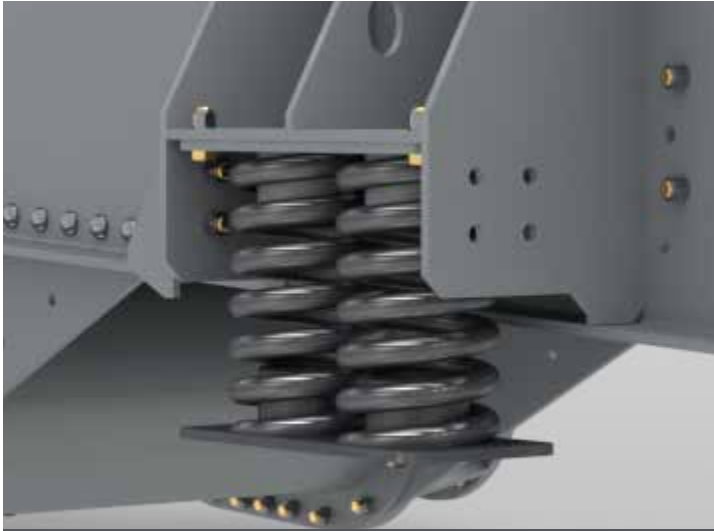
05/ BOLT IN GRIZZLY CARTRIDGES

- » One set of bars for flat or 5° slope
- » In-house, quality grizzly fabrication

06/ CUSTOM OPTIONS

- » Retrofittable replacement designs
- » Custom widths, grizzly, punch plate and finger deck

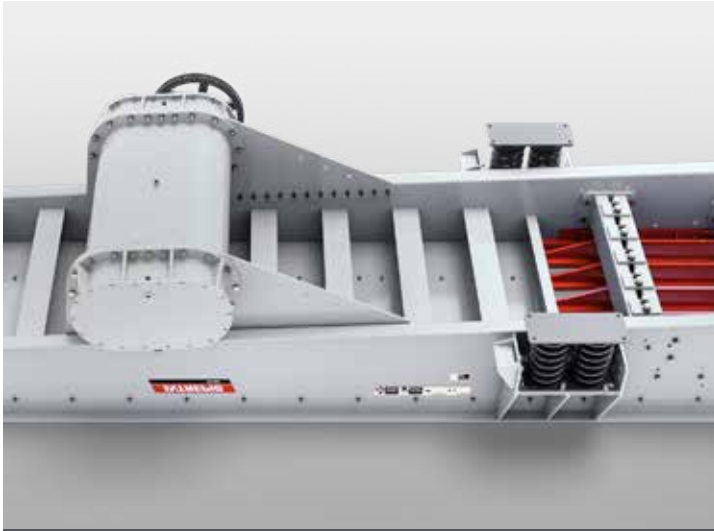
INTREPID VIBRATING GRIZZLY FEEDER FEATURES



01/ CORNER SUPPORT



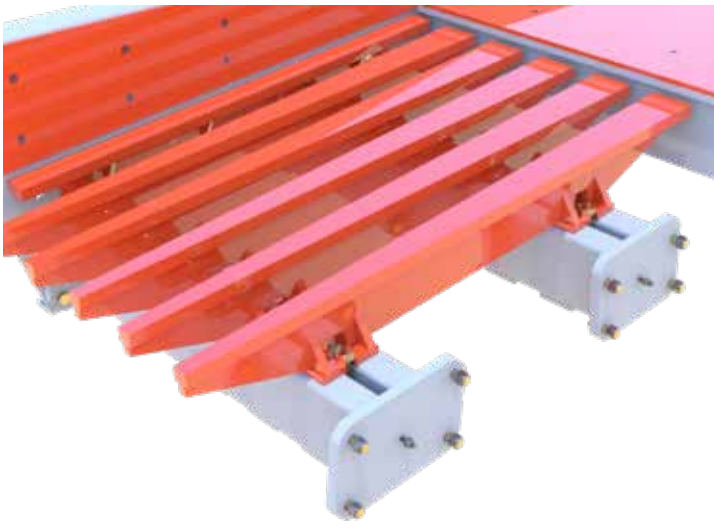
02/ MULTIPLE SPRING ARRANGEMENTS



03/ ROBUST PAN SECTION



04/ FULL-LENGTH LINER



05/ BOLT IN GRIZZLY CARTRIDGES



06/ CUSTOM OPTIONS

VIBRATING GRIZZLY FEADER SPECIFICATIONS

VIBRATING GRIZZLY FEEDERS							
Model	Size	Drive Size	HP	Speed	Grizzly	Pan Thickness	Pan Liner
3617VGF	36"x17'	90 MM	20	650-800	5ft single	3/4"	1/2"
4220VGF	42"x20'	110 MM	25	650-800	5ft sgl	3/4"	1/2"
4820VGF	48"x20'	110 MM	30	650-800	5ft sgl	3/4"	1/2"
4824VGF	48"x24'	130 MM	40	650-800	5ft sgl & dbl	3/4"	1/2"
5420VGF	54"x20'	130 MM	50	650-800	5ft sgl	3/4"	1/2"
5424VGF	54"x24'	130 MM	50	650-800	5ft sgl & dbl	3/4"	1/2"
6024VGF	60"x24'	130 MM	50	650-800	5ft sgl & dbl	3/4"	3/4"

ESTIMATED CAPACITY (TPH) - INCHES (MM)		
Pan Width	Horizontal	5° Decline
36 (914)	340	475
42 (1,067)	520	730
48 (1,219)	720	1000
54 (1,372)	880	1200
60 (1,524)	1020	1400

*Based on 100lbs/per cu. ft. free flowing material

SERVICE & SUPPORT



- » 24/7/365 live support at +1 (320) 589-7485
- » 2-Year equipment warranty
- » 1-year aftermarket parts warranty
- » Onsite repair technicians from dealer or factory
- » Preventative maintenance activities
- » Detailed equipment inspection
- » Optimization report from application specialist

AFTERMARKET PARTS



- » 24/7/365 parts ordering at +1 (320) 589-7547
- » Fully stocked warehouses for quick deliveries
- » Critical spare parts stocked by distributors
- » Custom, retrofit parts for competitive equipment

WARRANTY



- » We offer the industry's only 2-year product and 1-year parts' warranties, confirming our commitment to you.