



# Top Angle Take-Ups

PARTIALLY PROTECTED SCREW



## High Quality, Long Lasting Construction

- Standard ACME rod
- ACME thread design provides quick movement and reliability in dusty or corrosive conditions
- Solid round bar base adds strength
- Welders certified by American Welding Society (AWS D1.1)
- Durable powder coat finish

## Universal Design

- Industry standard design in hole dimensions, bolt spacing, bearing height and take-up lengths
- Easy to access, plated adjustment rod protected from falling material
- Rexnord, Link Belt, Browning, Seal Master, Dodge and SKF bearing brands available

## Stocked and Readily Available

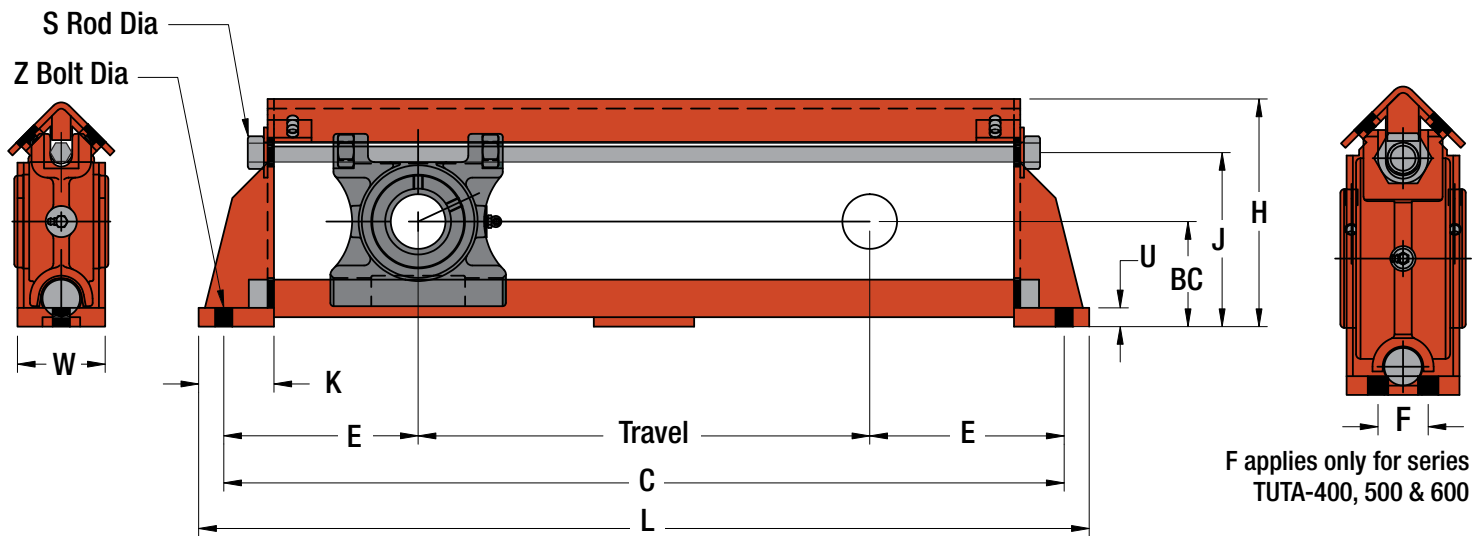
- Stocked by local distribution network
- Quick lead times from factory
- Broad size range, from 12" - 48" of travel



## Interchange and Bearing Sizes

Top Angle Take-Up Frame Sizes				Bearing Sizes (by bearing type)			
Superior	Dodge	PPI	CCI	Dodge Type E - TPE, Link Belt ETPB22400	Dodge S-2000	Normal Duty - Dodge Type G* (SC)	Medium Duty - Dodge Type GM** (SCM)
TUTA-100	TP-10	PTA200	CTA10	1-3/4" to 2"	1-15/16" to 2"	1-15/16" to 2"	1-11/16" to 1-3/4"
TUTA-200	TP-20	PTA203	CTA20	2-3/16"	-	2-3/16" to 2-1/4"	1-15/16" to 2"
TUTA-300	TP-30	PTA208	CTA30	2-1/4" to 2-1/2"	2-3/16"	2-7/16"	2-3/16" to 2-1/4"
TUTA-400	TP-40	PTA300	CTA40	2-11/16" to 3"	2-7/16" to 3"	2-15/16"	2-7/16" to 2-11/16"
TUTA-500	TP-50	PTA308	CTA50	3-3/16" to 3-1/2"	3-7/16"	-	2-15/16" to 3"
TUTA-600	TP-60	PTA400	CTA60	3-15/16" to 4"	3-15/16"	-	3-7/16" to 3-1/2"

# Top Angle Take-Up Specs



Part Number	Travel	WT (lbs)	BC	C	E	F	H	J	K	L	S Rod Dia	U	W	Z Bolt Dia
TUTA-100-12	12	35	3-15/16	26-1/2	7-1/4	N/A	8-3/8	6-5/16	3	28-1/2	3/4	3/4	3-1/2	5/8
TUTA-100-18	18	47		32-1/2						34-1/2				
TUTA-100-24	24	52		38-1/2						40-1/2				
TUTA-200-12	12	38	4-3/16	27-1/2	7-3/4	N/A	8-15/16	6-15/16	3	29-1/2	3/4	3/4	3-1/2	5/8
TUTA-200-18	18	49		33-1/2						35-1/2				
TUTA-200-24	24	56		39-1/2						41-1/2				
TUTA-300-12	12	45	4-3/8	28-1/2	8-1/4	N/A	9-15/16	7-3/8	3-1/2	30-1/2	1	3/4	4	3/4
TUTA-300-18	18	58		34-1/2						36-1/2				
TUTA-300-24	24	65		40-1/2						42-1/2				
TUTA-300-30	30	80		46-1/2						48-1/2				
TUTA-300-36	36	88		52-1/2						54-1/2				
TUTA-300-42	42	97		58-1/2						60-1/2				
TUTA-300-48	48	106		64-1/2						66-1/2				
TUTA-400-12	12	59	4-15/16	30-1/2	9-1/4	2	10-7/8	8-5/16	3-1/2	32-1/2	1	3/4	4-1/2	5/8
TUTA-400-18	18	71		36-1/2						38-1/2				
TUTA-400-24	24	80		42-1/2						44-1/2				
TUTA-400-30	30	90		48-1/2						50-1/2				
TUTA-400-36	36	99		54-1/2						56-1/2				
TUTA-400-42	42	108		60-1/2						62-1/2				
TUTA-400-48	48	117		66-1/2						68-1/2				
TUTA-500-12	12	70	5-7/16	32	10	2	12-5/16	9-7/16	4	34-1/2	1-1/4	3/4	4-1/2	3/4
TUTA-500-18	18	78		38						40-1/2				
TUTA-500-24	24	89		44						46-1/2				
TUTA-500-30	30	102		50						52-1/2				
TUTA-500-36	36	112		56						58-1/2				
TUTA-500-42	42	122		62						64-1/2				
TUTA-500-48	48	131		68						70-1/2				
TUTA-600-12	12	87	7	36	12	2-1/2	14-1/16	11-3/8	4-1/2	38-1/2	1-1/4	3/4	5-1/2	3/4
TUTA-600-18	18	97		42						44-1/2				
TUTA-600-24	24	106		48						50-1/2				
TUTA-600-30	30	116		54						56-1/2				
TUTA-600-36	36	125		60						62-1/2				
TUTA-600-42	42	135		66						68-1/2				
TUTA-600-48	48	145		72						74-1/2				

To get more information you can visit:  
[www.superior-ind.com](http://www.superior-ind.com) or call 1-800-437-9074

