



Telescoping Tube Take-Ups

F U L L Y P R O T E C T E D S C R E W



High Quality, Long Lasting Construction

- Standard ACME rod
- ACME thread design provides quick movement and reliability in dusty or corrosive conditions
- Telescoping tube surrounds ACME rod for minimum maintenance in harsh, abrasive applications
- Welders certified by American Welding Society (AWS D1.1)
- Durable powder coat finish

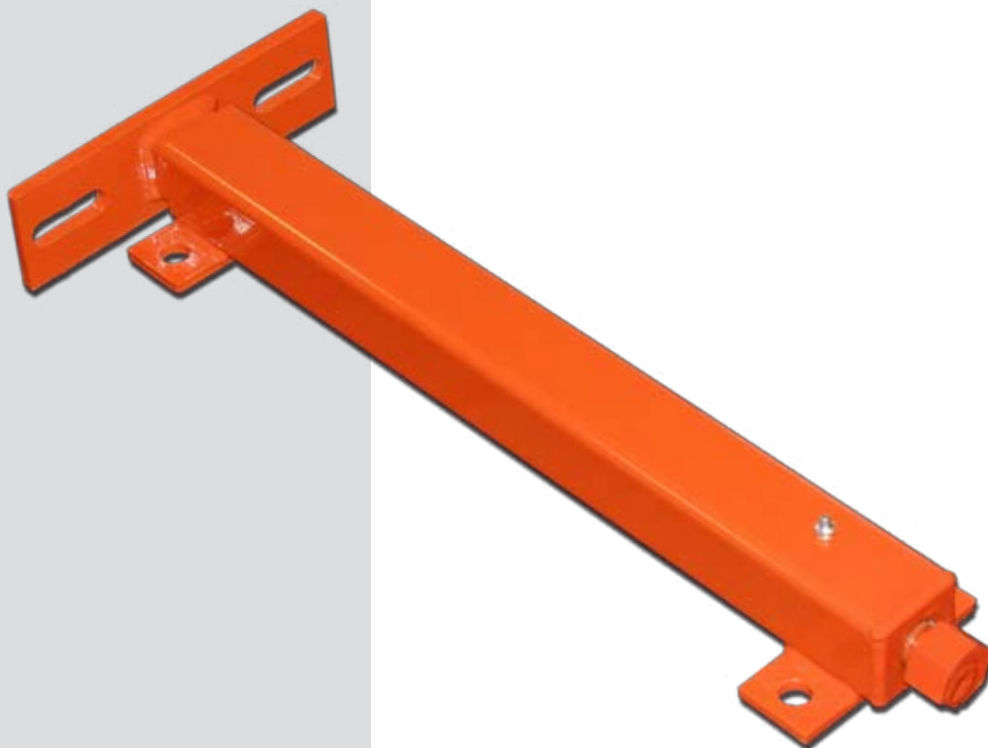
Simple Installation and Adjustment

- Compact design for tight clearance
- Four bolt design fits standard mounting locations
- Adjustment rod quickly takes up any belt stretch or sag, maintaining proper tension and minimizing belt slippage
- Standard 2-bolt, pillow block bearings
- Built for standard NP, MP, SC and SCM pillow block bearings
- Rexnord, Link Belt, Browning, Seal Master, Dodge and SKF bearing brands available

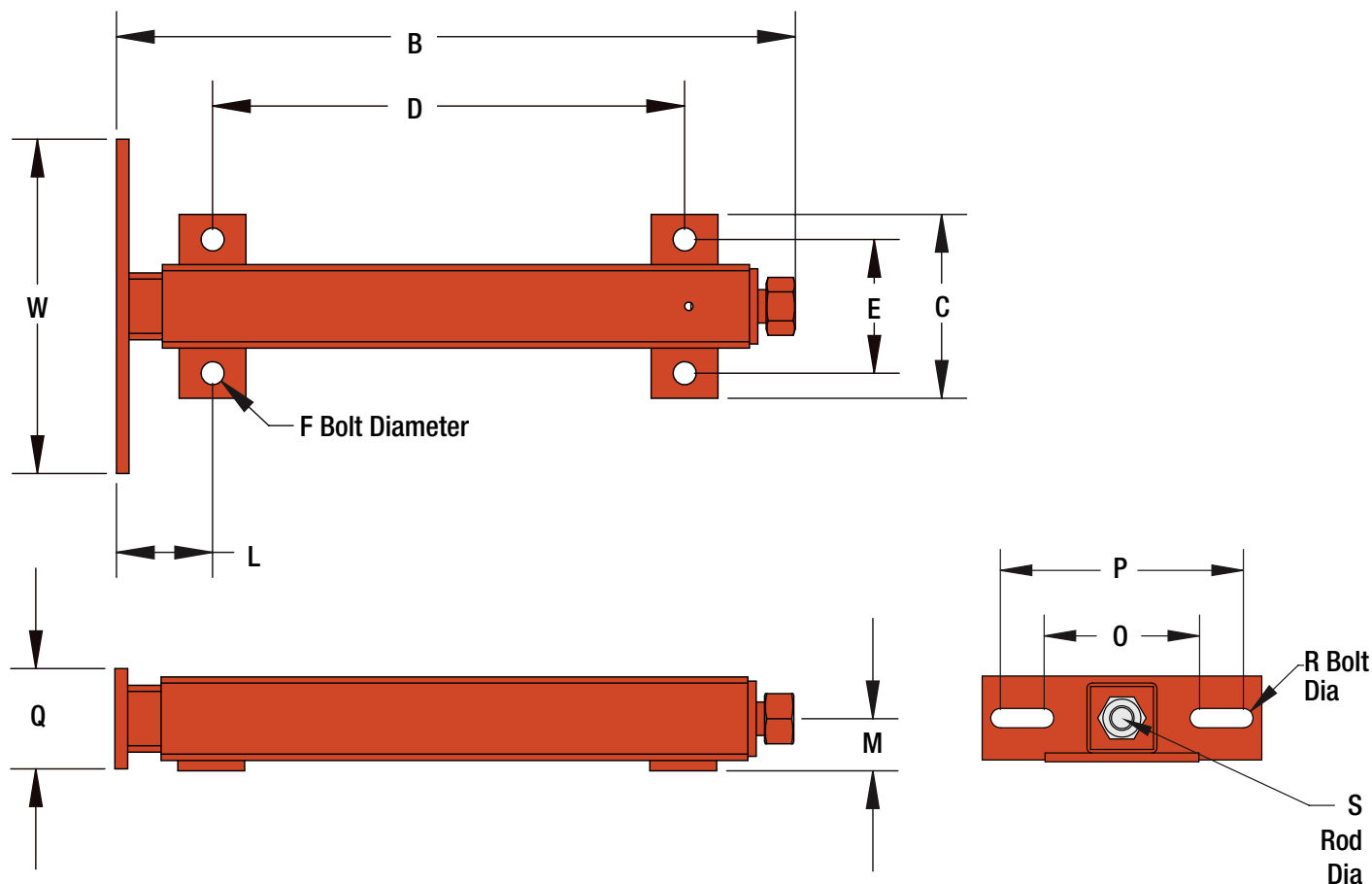


Easy to Access, Readily Available

- Stocked by local distribution network
- Quick lead times from factory
- Broad size range, from 3" - 60" of travel



Telescoping Tube Take-Up Specs



Part Number	Travel	Wt. (lbs)	B	C	D	E	F Bolt Dia.	L	M	O	P	Q	R Bolt Dia	S Rod Dia.	W	Bearing Range
TUTT-100-3	3	3	7-1/8	3-11/16	3-9/16	2-5/8	1/2	1-3/4	1-3/16	2-15/16	4-5/16	1-1/2	3/8	5/8	5-1/4	1/2" TO 1"
TUTT-100-6	6	4	10-5/8		7-1/16											
TUTT-100-9	9	5	14-5/8		11-1/16											
TUTT-250-3	3	5	8-9/16	4	4-3/8	3	1/2	2	1-3/16	3-3/4	5-3/4	2	1/2	3/4	7	3/4" TO 1-3/4"
TUTT-250-6	6	7	11-1/2		7-3/8											
TUTT-250-9	9	8	14-1/2		10-3/8											
TUTT-250-12	12	9	17-1/2		13-3/8											
TUTT-300-6	6	16	11-7/16	5-1/4	6-1/8	4	5/8	2-3/8	1-1/2	5-9/16	8-11/16	2-3/4	5/8	1	10	1-3/4" TO 2-15/16"
TUTT-300-9	9	18	15-1/8		10-1/8											
TUTT-300-12	12	21	19-1/8		14-1/8											
TUTT-300-18	18	26	26-1/8		21-1/8											
TUTT-350-9	9	24	19	6	12-5/8 to 13	4-1/2	5/8	2-1/2	1-3/4	5-9/16	8-11/16	3	5/8	1	10	1-3/4" TO 2-15/16"
TUTT-350-12	12	28	22		15-5/8 to 16											
TUTT-350-18	18	35	28		21-5/8 to 22											
TUTT-350-24	24	43	34		27-5/8 to 28											
TUTT-400-12	12	52	27-3/4	7-1/2	20	5-1/2	3/4	3-1/2	2-1/8	8-1/2	11-3/4	3-1/2	3/4	1-1/2	14	2-7/16" TO 3-1/2"
TUTT-400-18	18	62	33-3/4		26											
TUTT-400-24	24	72	39-3/4		32											
TUTT-400-36	36	92	51-3/4		44											
TUTT-400-48	48	112	63-3/4		56											
TUTT-500-18	18	216	41-3/8	11-1/2	31	9	1	3-7/8	3-1/2	Made To Order	Made To Order	7	Made To Order	2	20	3-11/16" TO 6"
TUTT-500-24	24	243	47-3/8		37											
TUTT-500-36	36	299	59-3/8		49											
TUTT-500-48	48	355	71-3/8		61											
TUTT-500-60	60	410	83-3/8		73											

Add "D" to the end of part number for a direct weld. No bolt flange or foot plate is included.

To get more information you can visit:
www.superior-ind.com or call 1-800-437-9074

