



Exterra® Belt Cleaner

PRIMARY BELT SCRAPER

The aggregate industry's most economical blade.



Longer Wear Life

Packed with more urethane where it is needed most to maintain an even wear pattern.

- Thicker blade at the cleaning edge dissipates heat before damage is done to the blade
- 83± Shore A durometer

Simple Installation and Repair

Shipped with a pre-assembled, easy to maintain patent pending tensioning system.

- Simple to adjust nut alters tensioning system
- Blade fits to mounting rod without tools
- Mounting rod and tensioning system can be switched without replacing entire system

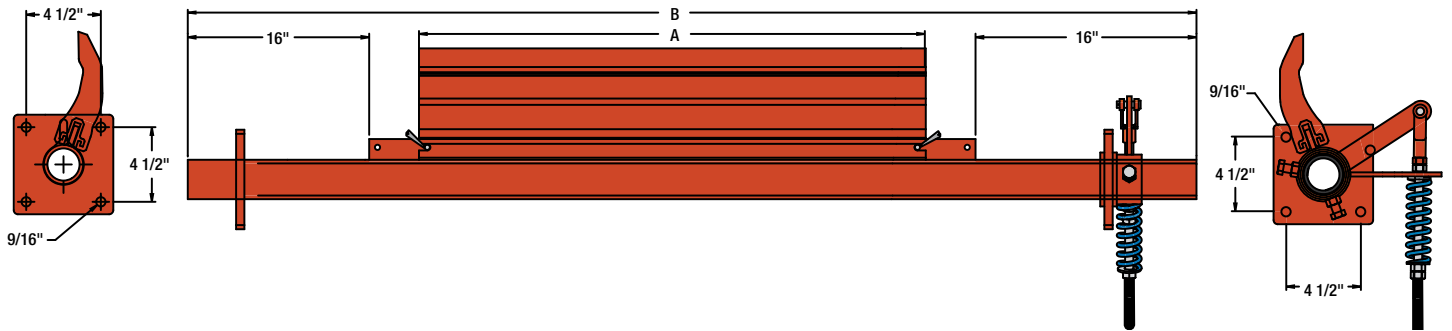
Interchangeability Between Competitors

To offset the cost of replacing an entire system, our patented blade retrofits onto other mounting rods.

- Flexco Rockline® EZP1
- Martin® QC™ #1 and Pit Viper
- American Eagle Standard Duty



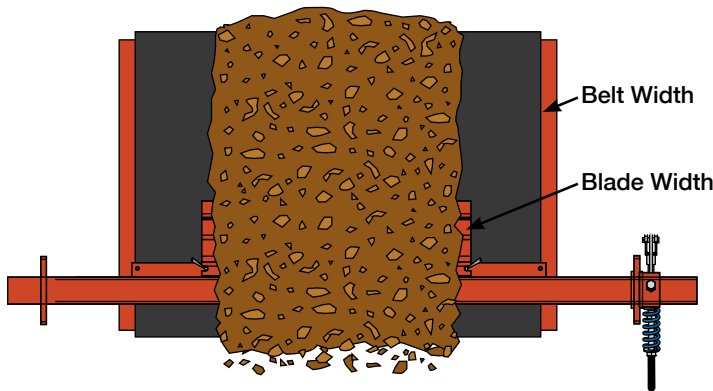
Exterra® Belt Cleaner | ORDERING INFO



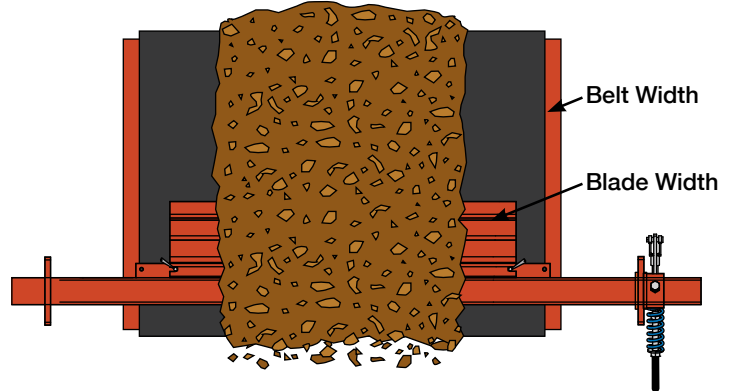
BW	A		B		Tensioner Quantity
	BW -8"	BW -2"	STD	XL	
18	10	16	48	60	1
24	16	22	54	66	1
30	22	28	60	72	1
36	28	34	66	78	1
42	34	40	72	84	2
48	40	46	78	90	2
54	46	52	84	96	2
60	52	58	90	102	2
66	58	64	96	108	2
72	64	70	102	114	2

Blade Replacement Part Numbers		
Part Number	Blade Length	Belt Width
07-00540	10"	18"
07-00541	16"	18"-24"
07-00542	22"	24"-30"
07-00543	28"	30"-36"
07-00544	34"	36"-42"
07-00545	40"	42"-48"
07-00546	46"	48"-54"
07-00547	52"	54"-60"
07-00549	58"	60"-66"
07-00548	64"	66"-72"
07-00550	70"	72"

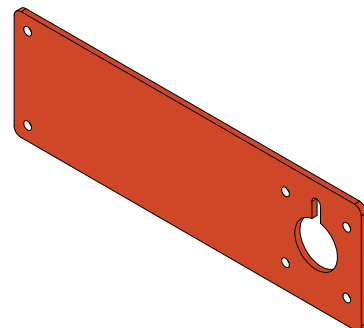
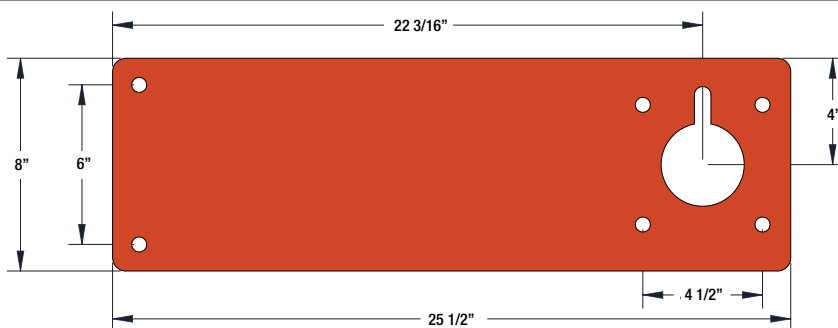
Belt Width Minus 8"



Belt Width Minus 2"



Optional Mounting Bracket



To get more information you can visit:
www.superior-ind.com or call 1-800-321-1558

