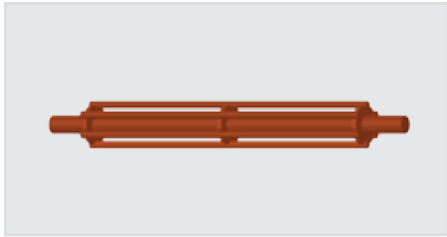


Beater Bar Return Rolls

Deflect Sticky Material Off the Belt



Quick Specs

- ▶ Shaft Size: 1-7/16" or 1-15/16"
- ▶ Roll Diameters: 5" and 6"
- ▶ Belt Widths: 18" - 72"

Frequently Asked Questions

What are common applications?

- ▶ Like the Urathon® return roll and rubber style returns, the beater bar is another tool to defeat sticky material buildup on the return side of your belt. Also, applications with cleated belts where belt cleaners are not an effective cleaning tool.

Where is the install point?

- ▶ Typically, we suggest installing the beater bar in the first return roll location from the head pulley. Here, the cleaning is focused on one roll rather than stressing out all the return rollers.



Digital Literature

Forward to Colleague



Beater Bar Return Rolls

Features and Benefits

Prevent Material Buildup

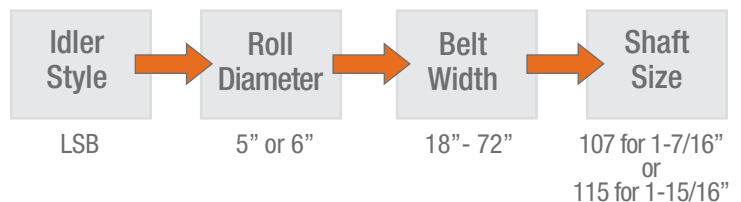
- ▶ Rods create beating motion to keep belt clean and free of any carryback material
- ▶ Bars allow gaps for material to escape, eliminating buildup on roll

Save the Belt

- ▶ Reduces costly belt tracking issues caused by material buildup
- ▶ Mounted with live shafts to support conveyor loads

Part Number Guide

Example: LSB-536-107



Pillow Block Bearing Order Info	
Part Number	Dimensions
03-02005	1-7/16"
03-02016	1-15/16"

