



# VIBRATORY EQUIPMENT

Guardian® Horizontal Screen / Anthem™ Inclined Screen / Intrepid™ Feeder



INTREPID FEEDER



ANTHEM INCLINED SCREEN



**01/ CORNER SUPPORT**

- » Bottle jack lifting point for 1.5" lift
- » Safer and simpler spring replacement

**02/ SPRAY BAR KNOCKOUTS**

- » Easily cut thin 1/8" cover
- » Quickly convert to wet plant

**03/ SEGMENTED BELT GUARD**

- » Multiple pieces for one person job
- » Fully enclosed for safer operation

**04/ BOLT-LOCKING HINGED ACCESS DOOR**

- » Convenient inspection and maintenance
- » Hinge prevents misplacing cover

**05/ INTEGRATED BELT TENSIONER**

- » Convenient for easy, quick access
- » Rubber suspension vs spring tension

**06/ SIDE LINERS ON DISCHARGE LIPS**

- » Standard feature for wear protection
- » 1/4" AR steel bolt in liners

**07/ VS2™ TECHNOLOGY**

- » Ensures smooth start up and shutdown
- » Provides peace of mind and extends life of equipment

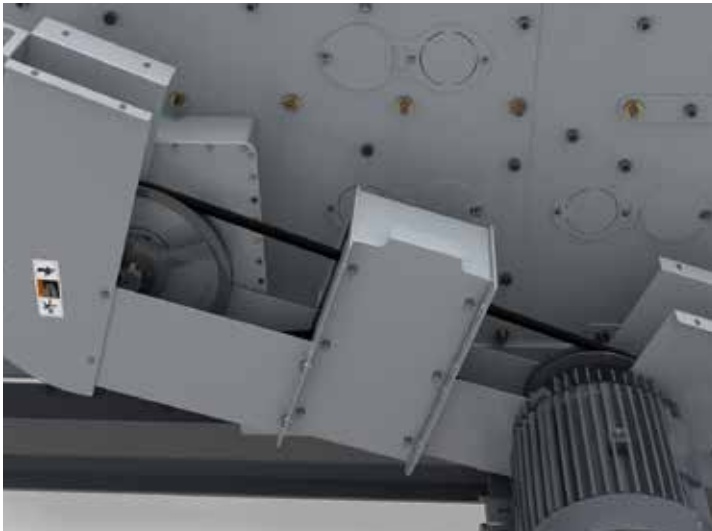
**GUARDIAN HORIZONTAL SCREEN FEATURES**



**01/ CORNER SUPPORT**



**02/ SPRAY BAR KNOCKOUTS**



**03/ SEGMENTED BELT GUARD**



**04/ BOLT-LOCKING HINGED ACCESS DOOR**



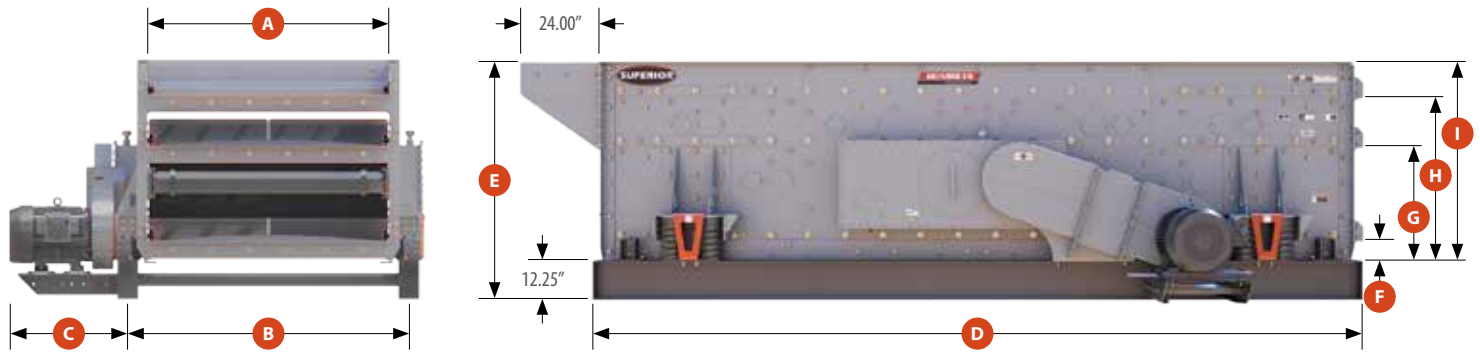
**05/ INTEGRATED BELT TENSIONER**



**06/ SIDE LINERS ON DISCHARGE LIPS**



## GUARDIAN HORIZONTAL SCREEN SPECIFICATIONS



### DIMENSIONS - INCHES (MM)

Model	A	B	C	D	E	F	G	H	I
5162-TH32	61.50 (1,550)	74.00 (1,880)	34.63 (880)	192.75 (4,895)	58.94 (1,500)	5.19 (130)	35.19 (895)	N/A	46.69 (1,185)
5163-TH32	61.50 (1,550)	74.00 (1,880)	34.63 (880)	192.75 (4,895)	75.44 (1,915)	5.75 (145)	35.75 (910)	51.75 (1,315)	63.25 (1,605)
6202-TH32	76.00 (1,930)	88.50 (2,247)	37.18 (944)	240.75 (6,115)	59.44 (1,510)	5.75 (145)	35.75 (910)	N/A	47.19 (1,200)
6202-TS32	76.00 (1,930)	88.50 (2,247)	37.18 (944)	240.75 (6,115)	69.63 (1,770)	4.19 (105)	34.19 (870)	N/A	45.75 (1,160)
6203-TH32	76.00 (1,930)	88.50 (2,247)	37.18 (944)	240.75 (6,115)	75.25 (1,910)	5.56 (140)	35.56 (905)	51.56 (1,310)	63.00 (1,600)
6203-TS32	76.00 (1,930)	88.50 (2,247)	37.18 (944)	240.75 (6,115)	85.38 (2,170)	4.00 (100)	34.00 (865)	49.94 (1,270)	61.56 (1,565)
7203-TH38	88.00 (2,235)	100.50 (2,550)	40.44 (1,025)	240.75 (6,115)	80.88 (2,055)	5.44 (140)	38.44 (975)	57.19 (1,450)	68.63 (1,745)
8203-TH38	100.00 (2,540)	112.50 (2,855)	40.44 (1,025)	240.75 (6,115)	80.69 (2,050)	5.31 (135)	38.31 (975)	57.06 (1,450)	68.50 (1,740)

NOTE: Vertical dimensions (discharge heights) are from top of baseframe.

Adj. Stroke	5/8" and 3/4"	Timing Angle	30° - 60°	5' and 6' Screen Bearing Size	160mm
Rcmd. Speed Range	675 - 875 RPM	Side Plate Thickness	5/16" (7mm)	7' and 8' Screen Bearing Size	190mm
Max. Feed Size	10.0" (254mm)	Reinforcing Plate Thick.	1/4" (6mm)	Take-Up Rails**	4' standard
Max. Top Deck Opening	5.0" (127mm)	Feed Box Liners*	1/4" (6mm)	Angle	Horizontal or 2.5°
Max. Feed Drop	18" (457mm)	Discharge Lip Liner Thick.*	1/4" (6mm)	Max. Media Weight	8 lb/ft <sup>2</sup> (383 pascal)

\* AR Plates

\*\* Optional 5-ft. take-up rails on 20-ft. screen



Rock Face to Load Out™



**01/ CORNER SUPPORT**

- » Bottle jack lifting point for 1.5" lift
- » Safer and simpler spring replacement

**02/ DRIVE WEIGHTS**

- » Exclusive bolt on shaft weights
- » Adjust stroke 1/4" up or down

**03/ SEGMENTED BELT GUARD**

- » Easier for one person to access
- » Quick access to sheave and flywheel without completely removing guard

**04/ ACCESS DOOR**

- » Convenient inspection and maintenance
- » Hinge prevents misplacing cover

**05/ STRAIGHT SHAFT (NOT SHOWN)**

- » One shaft applicable to all models
- » Bolt weights create eccentric offset

**06/ SIDE LINERS ON DISCHARGE LIPS**

- » Standard feature for wear protection
- » 1/4" AR steel bolt in liners



**ANTHEM INCLINED SCREEN FEATURES**



**01/ CORNER SUPPORT**



**02/ DRIVE WEIGHTS**



**03/ SEGMENTED BELT GUARD**



**04/ ACCESS DOOR**



**05/ STRAIGHT SHAFT**



**06/ SIDE LINERS ON DISCHARGE LIPS**

## GUARDIAN HORIZONTAL SCREEN MODELS AVAILABLE

MODELS			
Model	Double Deck	Triple Deck	Quad Deck
5x16	X	X	
6x16	X	X	
6x20	X	X	
7x20	X	X	
8x20	X	X	X
8x24	X	X	X

Single shaft or two shaft drive based on application.





**01/ CORNER SUPPORT**

- » Bottle jack lifting point for 1.5" lift
- » Safer and simpler spring replacement

**02/ MULTIPLE SPRING ARRANGEMENTS**

- » Inboard for heavy loads, rock boxes and stationary applications
- » Lighter duty and portable plant applications

**03/ ROBUST PAN SECTION**

- » I-Beam supports on 16" centers
- » Improves impact resistance and durability

**04/ FULL-LENGTH LINER**

- » Standard liner for horizontal
- » Sloped liner for 5° incline

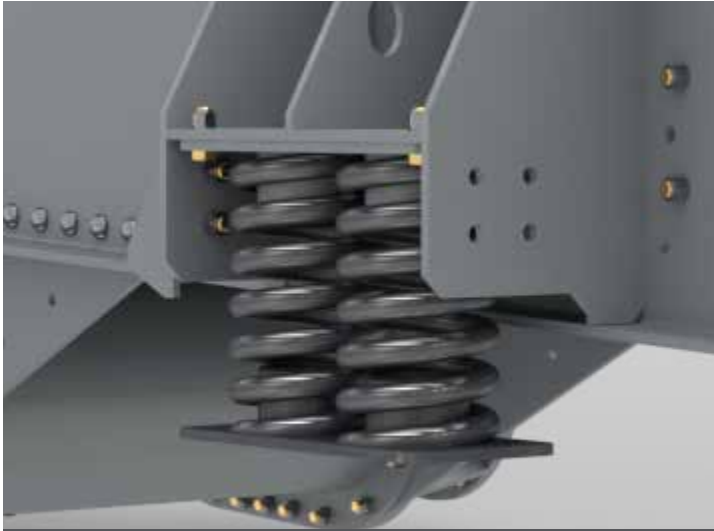
**05/ BOLT IN GRIZZLY CARTRIDGES**

- » One set of bars for flat or 5° slope
- » In-house, quality grizzly fabrication

**06/ CUSTOM OPTIONS**

- » Retrofittable replacement designs
- » Custom widths, grizzly, punch plate and finger deck

INTREPID VIBRATING GRIZZLY FEEDER FEATURES



01/ CORNER SUPPORT



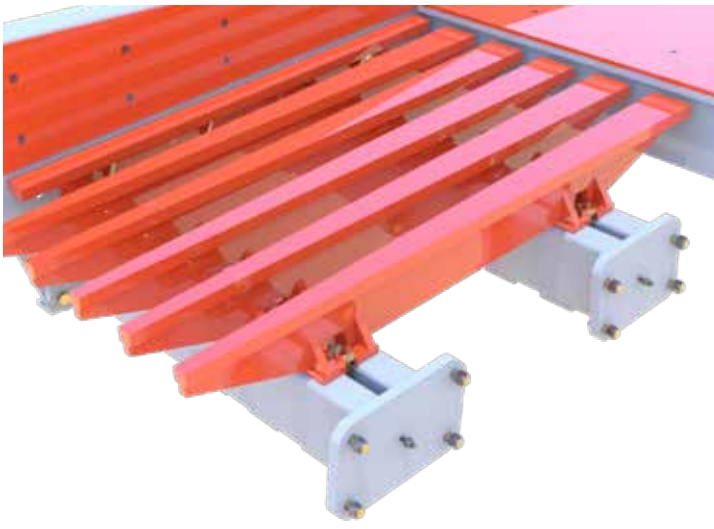
02/ MULTIPLE SPRING ARRANGEMENTS



03/ ROBUST PAN SECTION



04/ FULL-LENGTH LINER



05/ BOLT IN GRIZZLY CARTRIDGES



06/ CUSTOM OPTIONS

## VIBRATING GRIZZLY FEADER SPECIFICATIONS

VIBRATING GRIZZLY FEEDERS							
Model	Size	Drive Size	HP	Speed	Grizzly	Pan Thickness	Pan Liner
3617VGF	36"x17'	90 MM	20	650-800	5ft single	3/4"	1/2"
4220VGF	42"x20'	110 MM	25	650-800	5ft sgl	3/4"	1/2"
4820VGF	48"x20'	110 MM	30	650-800	5ft sgl	3/4"	1/2"
4824VGF	48"x24'	130 MM	40	650-800	5ft sgl & dbl	3/4"	1/2"
5420VGF	54"x20'	130 MM	50	650-800	5ft sgl	3/4"	1/2"
5424VGF	54"x24'	130 MM	50	650-800	5ft sgl & dbl	3/4"	1/2"
6024VGF	60"x24'	130 MM	50	650-800	5ft sgl & dbl	3/4"	3/4"

ESTIMATED CAPACITY (TPH) - INCHES (MM)		
Pan Width	Horizontal	5° Decline
36 (914)	340	475
42 (1,067)	520	730
48 (1,219)	720	1000
54 (1,372)	880	1200
60 (1,524)	1020	1400

\*Based on 100lbs/per cu. ft. free flowing material



---

## SERVICE & SUPPORT



- » 24/7/365 live support at +1 (320) 589-7485
- » 2-Year equipment warranty
- » 1-year aftermarket parts warranty
- » Onsite repair technicians from dealer or factory
- » Preventative maintenance activities
- » Detailed equipment inspection
- » Optimization report from application specialist

---

## AFTERMARKET PARTS



- » 24/7/365 parts ordering at +1 (320) 589-7547
- » Fully stocked warehouses for quick deliveries
- » Critical spare parts stocked by distributors
- » Custom, retrofit parts for competitive equipment

---

## WARRANTY



- » We offer the industry's only 2-year product and 1-year parts' warranties, confirming our commitment to you.